

PLAT OF WHISPERING SOUND 2

LYING IN FRACTIONAL SECTION 19,
TOWNSHIP 38 SOUTH, RANGE 41 EAST
MARTIN COUNTY, FLORIDA.

DECEMBER, 1993

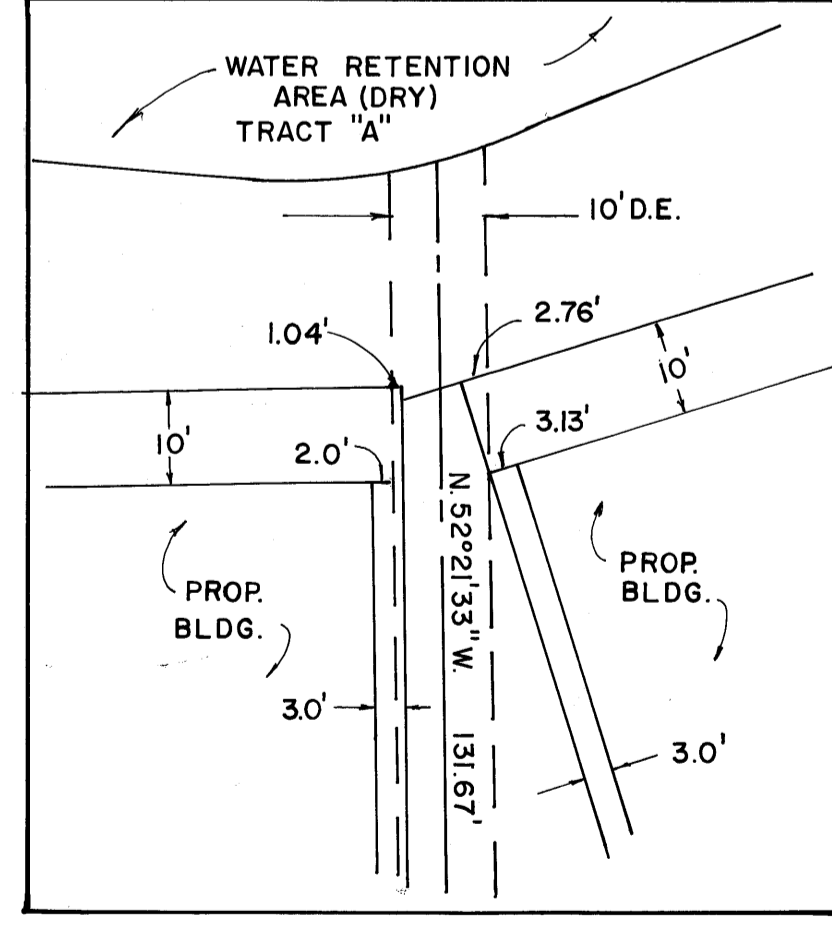
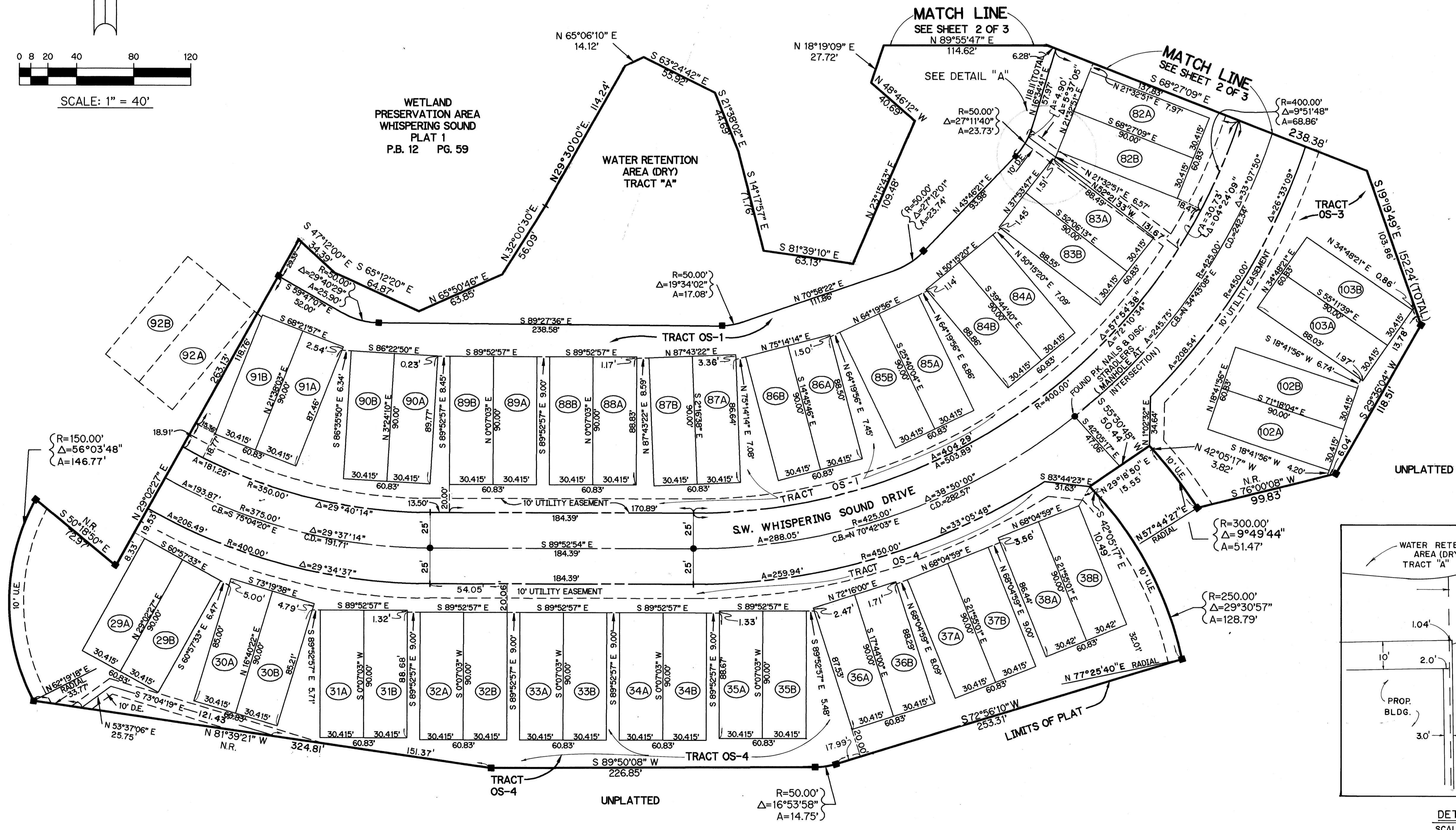
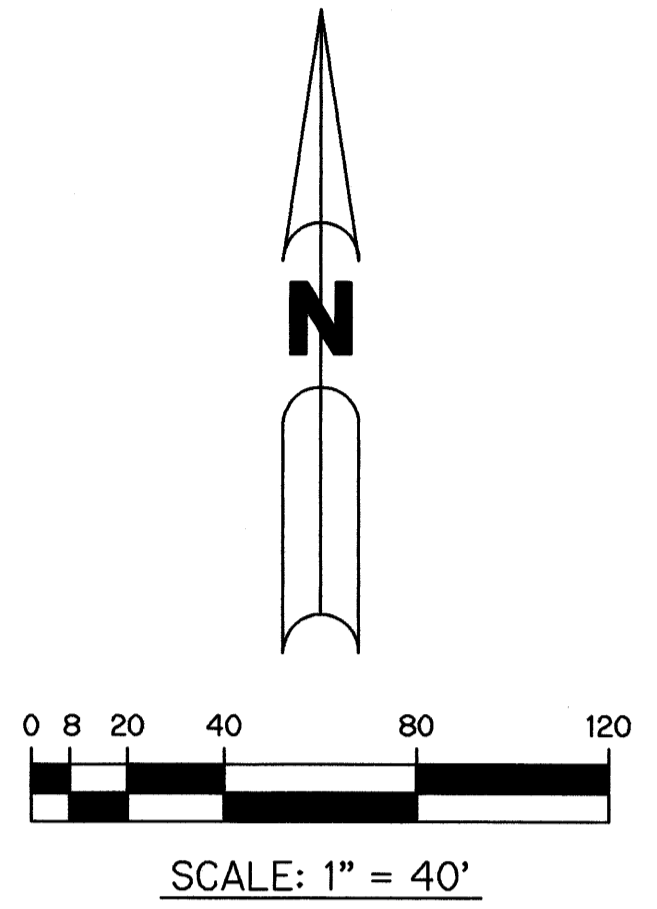
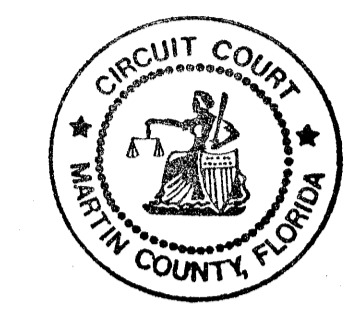
SHEET 3 OF 3

STATE OF FLORIDA
 COUNTY OF MARTIN SS:
 CLERK'S RECORDING CERTIFICATE

I, MARSHA STILLER, CLERK
 OF THE CIRCUIT COURT OF
 MARTIN COUNTY, FLORIDA,
 HEREBY CERTIFY THAT THIS
 PLAT WAS FILED FOR RECORD
 IN PLAT BOOK _____
 PAGE 13
 MARTIN COUNTY, FLORIDA,
 PUBLIC RECORDS, THIS 13 DAY
 OF DEC 1993

MARSHA STILLER, CLERK
 CIRCUIT COURT
 MARTIN COUNTY, FLORIDA
 BY: Charlotte Binkley
 DEPUTY CLERK

FILE NO. _____
10116581
 (Circuit Court Seal)



DETAIL "A"
 SCALE: 1" = 20'